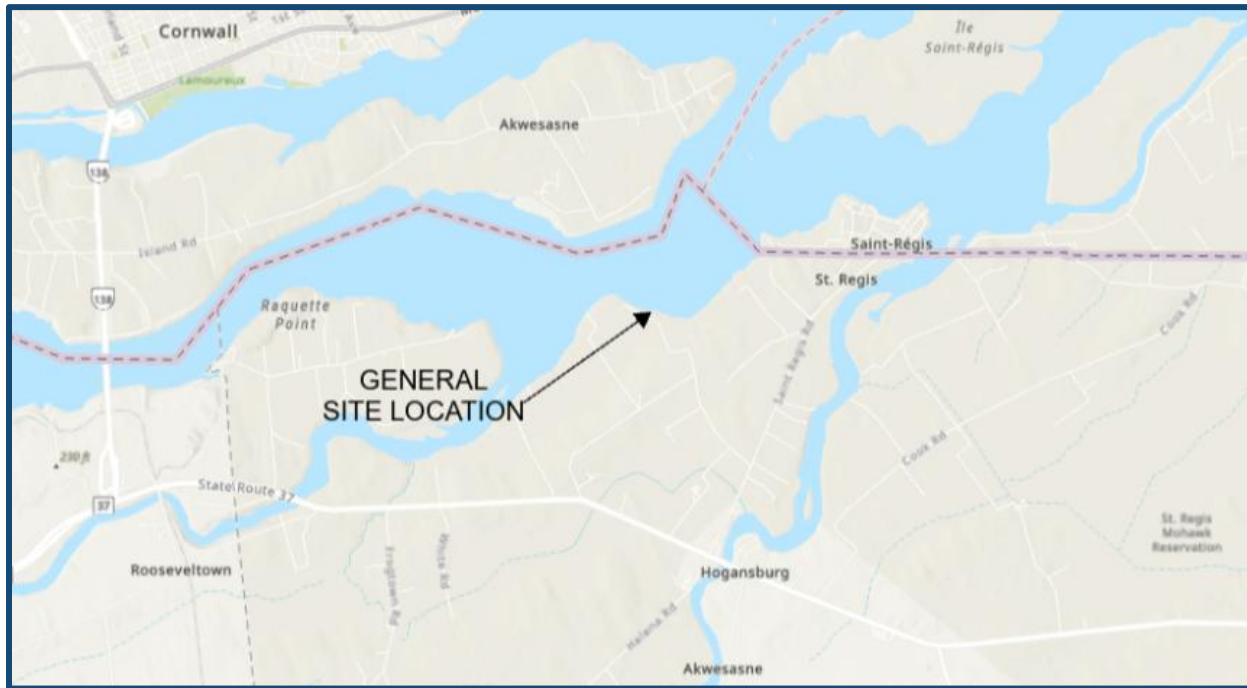




SRMT Remediation and Restoration (R&R) Program: Former Garrow's Marina Brownfields Site



What is a Brownfield Site?

A Brownfields is a property that is, or has the potential to be, contaminated. The United States Environmental Protection Agency's (USEPA) Brownfields Program provides grants and technical assistance to communities, states, tribes and others to assess, safely clean up and sustainably reuse contaminated properties. For more information, please go to www.epa.gov/brownfields. This project is supported by USEPA Brownfields Program funds to the Saint Regis Mohawk Tribe's (SRMT) Environment Division Remediation and Restoration (R&R) Program.

Summary of Phase II Environmental Site Assessment Results

A Phase II Environmental Site Assessment (ESA) was performed at the Former Garrow's Marina Site in May 2023 by SRMT R&R Program. The investigations and report were conducted by R&R Program contractors, JMT of New York, Inc. The objectives of the assessment were to assess environmental conditions at the site (approximately 0.55-acre portion of 90 Garrow Road, Hogansburg, NY or Lot #421) as they related to recognized environmental conditions (RECs) identified in a 2018 Phase I ESA (updated 2022). The RECs assessed included:

1. Soil and groundwater near the former boat-fueling service infrastructure (underground fuel lines, former tank pad/pumps) associated with two former 2000-gallon aboveground storage tanks.
2. Shoreline sediment that could have been impacted by polychlorinated biphenyls (PCBs) from the former GM (RACER Trust) Federal Superfund site located approximately 1 mile upstream from the site.

Soil and groundwater were analyzed for volatile organic compounds (VOCs), semi-volatile organic compounds (SVOCs), pesticides, and PCBs. Analytical results indicate that subsurface soil and groundwater contamination is relatively low with some exceedances of relevant standards. SRMT Water Quality Standards were applied to groundwater. New York State Department of Environmental Conservation (NYSDEC) Ambient Groundwater Quality Standards were applied to groundwater in the absence of individual SRMT standards. NYSDEC Soil Cleanup Objectives were applied to soil in the absence of SRMT standards.

Summary of ABCA Alternatives

An Analysis of Brownfield Cleanup Alternatives (ABCA) was completed in October 2024, after the Phase II ESA report was finalized. Three cleanup alternatives were considered and compared on factors such as human health, environmental/ecological impacts, future property use, and cost.

Alternative 1: No Action

Alternative 2: Infrastructure and Select Soil Removal – Selected Remedy

Alternative 3: Infrastructure and Select Soil Removal, and in-Situ Groundwater Treatment

After consideration of all three alternatives, Alternative 2: Infrastructure and Select Soil Removal was selected with input from the Akwesasne Brownfield Committee (ABC). The ABC is an advisory group of community members to help inform decisions by SRMT R&R Program Brownfield Sites in SRMT jurisdiction.

All report details in Phase I ESA, Phase II ESA, and ABCA are available at SRMT Environment Division.

Summary of Remedial Action Work Plan

Planned activities outlined in the July 2025 Remedial Action Work Plan include the removal of former above and below ground petroleum fueling infrastructure (e.g., concrete pad, piping, and pump pads), removal and offsite disposal of any petroleum liquids, proper disposal/recycling of concrete debris and scrap metal, and removal/offsite disposal of contaminated soil if discovered during infrastructure removal. Approximately 100 cubic yards of contaminated soil were budgeted for disposal. Site restoration activities will include the import of clean fill to return infrastructure and soil removal areas to existing grade conditions and surface seeding.

Summary of Environmental Monitoring

Environmental monitoring will be conducted throughout various stages of remediation. Each component is outlined below:

Community Air Monitoring - Environmental personnel will oversee real-time monitoring for VOCs and particulates (i.e., dust) during planned site activities. Two monitoring locations, one upwind and one downwind from the work area, will be determined each day, and units capable of measuring concentrations of VOCs and dust will be set up. This monitoring is intended to provide a measure of protection for the downwind community. Should air leaving the site exceed thresholds outlined in the work plan, measures will be taken to reduce airborne contamination from leaving the site.

St. Lawrence River Water Monitoring – Environmental personnel will collect river samples (SVOCs and PCBs) upstream and downstream of the site. Samples will be collected prior to, during, and after the implementation of the remedy. A real-time turbidity measurement will also be recorded during these sample collections. This monitoring is intended to provide a measure of protection for the Akwesasne community to ensure no adverse environmental impacts are created as a result of this remediation project.

St. Lawrence Shoreline Monitoring – Environmental personnel will make visual observations of the shoreline condition and stability prior to, during, and after the implementation of the remedy. Should shoreline stability change during the observation time period, SRMT Environment Division staff will be notified immediately.

Monitoring Well Re-Sampling and Decommissioning – One existing monitoring well that had a prior SVOC exceedance at the site will be re-sampled prior to site remedy to confirm water quality is unchanged from the initial Phase II ESA activities. The two wells at the site will then be decommissioned prior to remedial activities.

Public Awareness

Remedial activities are scheduled to begin on October 20, 2025, and will take approximately three weeks to complete. During the remediation process, community members may observe the presence of heavy equipment such as excavators and dump trucks operating on and entering/exiting from the site. This equipment is used to remove contaminated soil and infrastructure, haul waste to and from the site, or support other cleanup activities. In addition, environmental personnel will be present to collect soil and water samples, conduct monitoring activities as described above, and see that remediation goals are met. Environmental monitoring samples outlined above will also occur prior remedial activities. While some noise and temporary traffic disruptions may occur, all activities will be conducted in accordance with environmental regulations to protect public health and the surrounding environment. If any questions, please contact SRMT Environment Division via contact information below.

CONTACT INFORMATION

Saint Regis Mohawk Tribe Environment Division

Craig Arquette, Environmental Specialist

Remediation and Restoration Program: 850 State Route 37

Akwesasne, New York 13655

Phone: 518-358-5937 x 5054

Email: remediationrestoration.environment@srmt-nsn.gov

Website: www.srmt-nsn.gov/programs/environment/remediation-and-restoration